

2024.02.09

බස්නාහිර පළාත් අධ්‍යාපන දෙපාර්තමේන්තුව மேல் மாகாணக் கல்வித் திணைக்களம் Department of Education - Western Province			
වර්ෂ අවසාන ඇගයීම - 2023 (2024) ஆண்டிறுதி மதிப்பீடு - 2023 (2024) Year End Evaluation - 2023 (2024)			
ශ්‍රේණිය தரம் Grade	06	විෂය பாடம் Subject	Science
		පත්‍රය வினாத்தாள் Paper	I, II
		කාලය காலம் Time	2 Hours
නම பெயர் Name		විභාග අංකය சுட்டிலக்கம் Index No.	



- Answer all the questions in part I.
- Underline the correct answer.

### Part I

01. Green colour, Autotrophic, Respire, Grow, Reproduce. The organism that has all these characteristics is,
  1. Paddy bug
  2. Grass hopper
  3. Paddy plant
  4. Parrot
02. Teats and gloves are made up of rubber because of the property of,
  1. Brittleness
  2. Malleability
  3. Elasticity
  4. Plasticity
03. What is the type of energy source used in thermal power stations to rotate the turbine?
  1. Sea waves
  2. Wind
  3. Nuclear substances
  4. Coal
04. A group of students observed 3 substances A, B, and C and recorded their observations as follows.

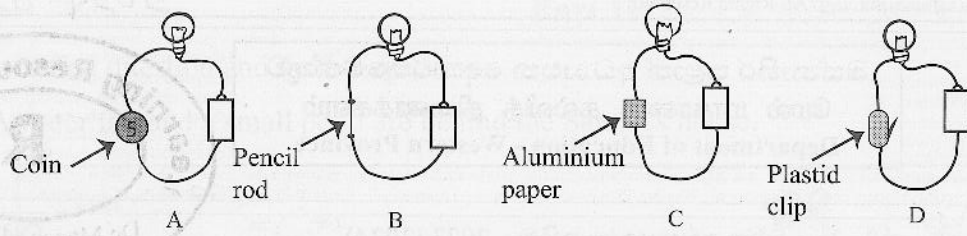
Substance	Shape	Volume
A	No definite shape	has a definite volume
B	Has a definite shape	has a definite volume
C	No definite shape	No definite volume

The substances A, B, C will be,

	A	B	C
1.	Cake of soap	Water	Air
2.	Water	Cake of soap	Air
3.	Air	Cake of soap	Water
4.	Water	Air	Cake of soap

05. Select the answer with the animals whose body temperature doesn't change according to the temperature of the environment.
  1. Snake, Frog
  2. Man, Parrot
  3. Lizard, Insect
  4. Fish, Monitor

06.

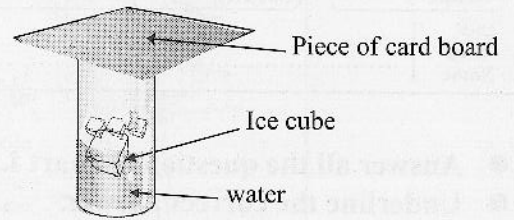


From the above circuits, in which circuit bulb does not light up?

1. A                      2. B                      3. C                      4. D

07. The expected observation of the activity given in the picture by the students is.

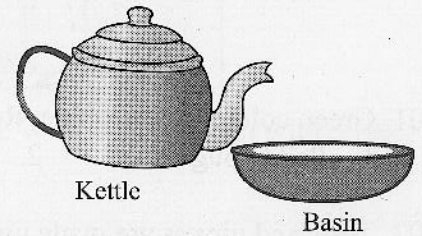
1. to test the salinity of water
2. to identify the states of water
3. to identify the types of water based on availability
4. to test whether there is water vapour in the atmosphere



08.

When the whole amount of water in the kettle is put in to the basin,

1. the volume of the water changes
2. the shape of the water changes
3. the state of water changes.
4. the mass of water changes



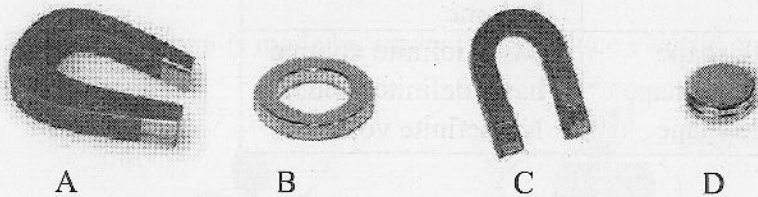
09. Landslides mostly occur in,

1. Coastal areas                      2. Plains                      3. Slope areas with mountains                      4. forest areas

10. The animal who has faced a threat of extinction, as it depends on one type of food is,

1. Deer                      2. Panda                      3. Kangaroo                      4. Rabbit

11.



The answer that includes the above types of magnets in order is,

1. Ring magnet, button magnet, U magnet, horse shoe magnet
2. U magnet, Ring magnet, horse shoe magnet, button magnet
3. horse shoe magnet, ring magnet, U magnet, button magnet
4. Button magnet, horse shoe magnet, U magnet, ring magnet

12. (a) The flute made using tender coconut leaves (Gok kola Nalawa) produces sound in the same way as the flute.

(b) Sarpina produces sound in the same way as the drum.

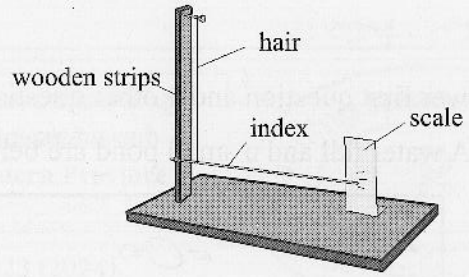
(c) Violin produces sound in the same way as the guitar.

The correct statements from the above are,

1. a and b only                      2. a and c only                      3. b and c only                      4. All a, b, c

13. What is indicated by the picture given here?

1. The anemometer
2. the windvane
3. the hygrometer
4. the thermometer



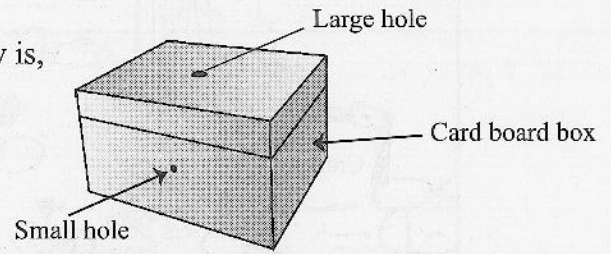
14. Which of the following process takes place only in plants.

1. Take oxygen and release carbondioxide.
2. Take carbon dioxide and release oxygen.
3. Produce food using oxygen and light energy.
4. Produce carbondioxide by spending glucose.

15. An activity related to vision is given below.

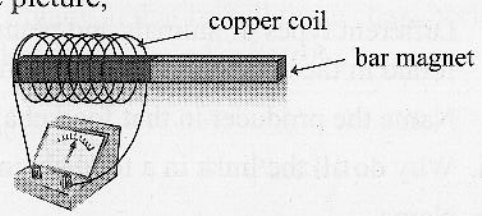
The conclusion that can be arrived according to this activity is,

1. A hole is needed for the vision
2. An object is needed for the vision
3. An eye is needed for the vision
4. Light is needed for the vision.



16. When the bar magnet is moved inside the coil as shown in the picture,

1. it generates heat energy.
2. It generates electric energy
3. it generates magnetic energy.
4. It generates light energy.



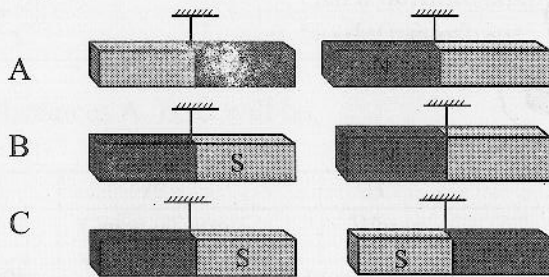
17. Our main source of energy is

1. The Sun
2. Fire wood
3. Coal
4. Petroleum gas

18. Which of the following is an instance where the expansion is not used in day to day life?

1. When fixing an iron rim to a cart wheel.
2. keeping a gap between rails.
3. Removing a metal lid from a bottle.
4. Fixing an iron gate.

19. Two magnets are hung closer to each other as shown below.



Observations of A, B and C respectively are,

1. Repell, Repell, Attract
2. Repell, Attract, Repell
3. Attract, Attract, Repell
4. Attract, Repell, Repell

20. A phenomena that does not occur due to the global warming is,

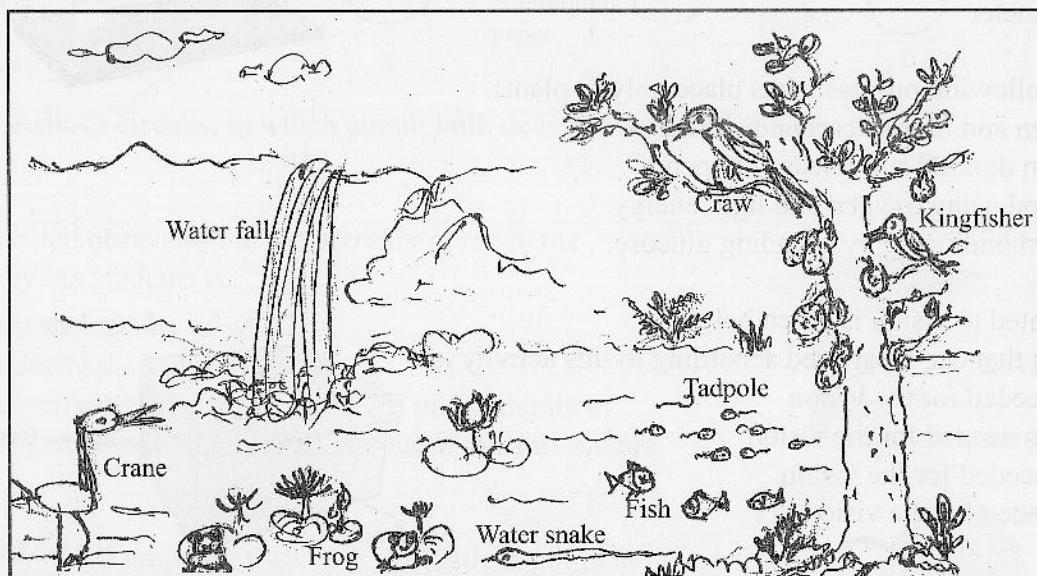
1. Occurance of land slides.
2. Melting of glaziers
3. Rising of sea level
4. Submerging small islands.

(Total 40 marks)

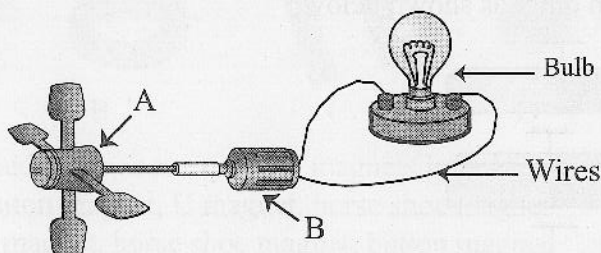
## Part II

- Answer first question and 4 other questions

(1) A. A water fall and a small pond are behind the Saman's house.



- i. Different types of animals and plants are associated with the pond. Write a food chain with 3 links found in the environment shown in the picture. (03 marks)
  - ii. Name the producer in that food chain. (01 mark)
  - iii. Why do all the links in a food chain are important? (02 marks)
  - iv. Name,
    - (a) Herbivorous
    - (b) Carnivorous
    - (c) Omnivorous animal in above environment (03 marks)
  - v. What is the process that takes place in green plants in the presence of sunlight? (01 mark)
- B. Following set up is made by students to produce electric energy by an energy source.

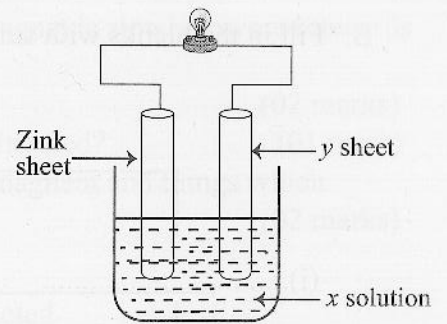


- i. What is the energy source used for functioning the above set up? (01 mark)
- ii. Name the component B used to generate electrical energy. (01 mark)
- iii. How do you identify whether the above setup generate electricity. (01 mark)
- iv. Write 2 changes that can be done to increase the brightness of the bulb. (02 marks)
- v. State a place where wind power station is located in Sri Lanka. (01 mark)

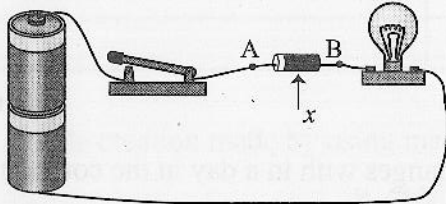
(Total 16 marks)

02. A. Given below is a picture of a simple cell prepared by a group of students.

- i. Name the solution x. (01 mark)
- ii. What is the metal used as y (01 mark)
- iii. Write an observation for each at zinc plate and at Y plate when the above set up is functioning. (02 marks)



B.



- i. Draw the above circuit using standard symbols
- ii. What is the main function of component X ?
- iii. Is the current flows from A to B or B to A direction.



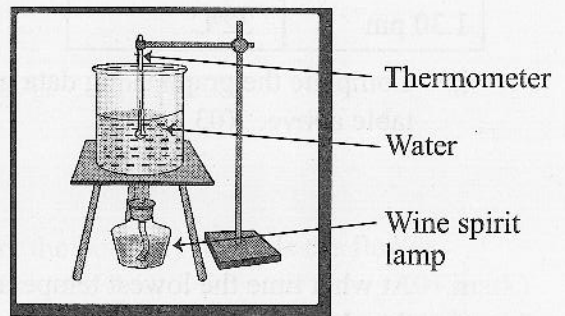
9312

- (04 marks)
- (02 marks)
- (01 mark)

(Total 11 marks)

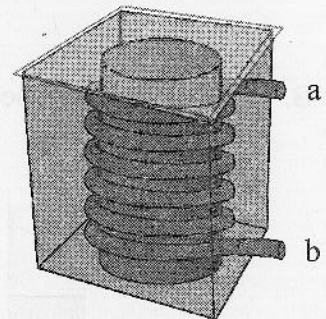
03. A. An activity done by students related to heat is shown below.

- i. Which type of energy is supplied to the water by the spirit lamp? (01 mark)
- ii. What is the observation made in the thermometer short time after lightning the spirit lamp? (02 mark)
- iii. What is the thermometer reading when the water boils? (01 mark)
- iv. Write the change of state that takes place when water boils. (02 marks)



B. A set up arranged to examine the uses of heating effect is shown here.

- i. Name the above device. (01 mark)
  - ii. Which end of the rubber tube should be connected to the water tap? Is it upper end 'a' or lower end 'b' (02 mark)
  - iii. What is the reason for applying black paint on the PVC tube, plastic tube and aluminium foil in the box. (02 marks)
- (Total 11 marks)



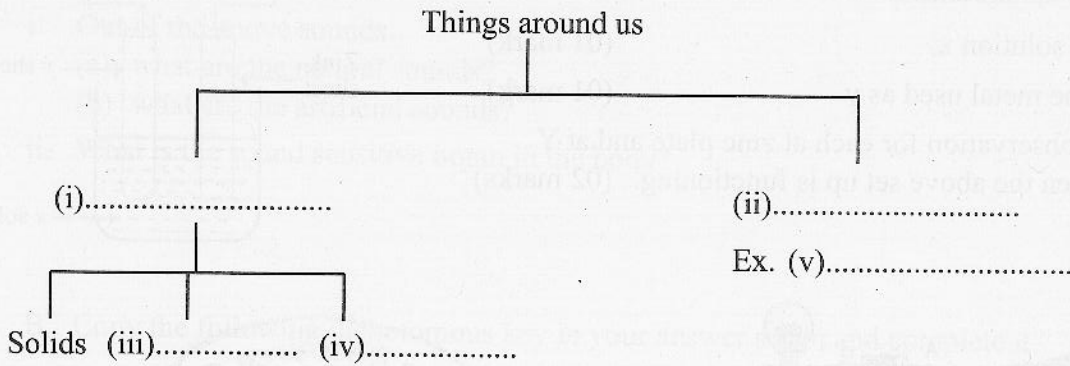
04. A. A student has a container with the following list of substances.

Answer the questions given below based on the those substances.

A balloon, A colourless polythene, A piece of charcoal, A copper wire, A coloured oil paper, cotton wool.

- (i) A transparent material .....
- (ii) A brittle substance .....
- (iii) A material with ductility .....
- (iv) A translucent material .....
- (v) A material with an elastic nature .....
- (vi) A material with Soft texture ..... (06 marks)

B. Fill in the blanks with suitable words.

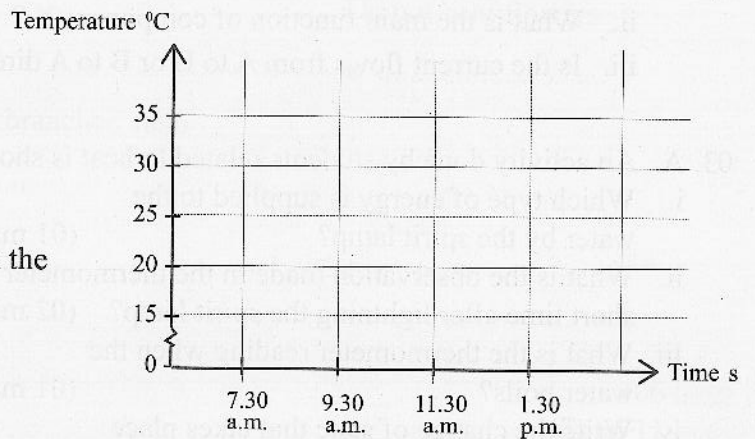


(05 marks)

(Total 11 marks)

05. A. group of grade 6 students measured the temperature changes with in a day in the compound infront of their class room and tabulate it as follows.

Time	Temperature
7.30 am	25°C
9.30 am	29°C
11.30 am	30°C
1.30 pm	32°C



i. Complete the graph using data given in the table above. (03 mark)

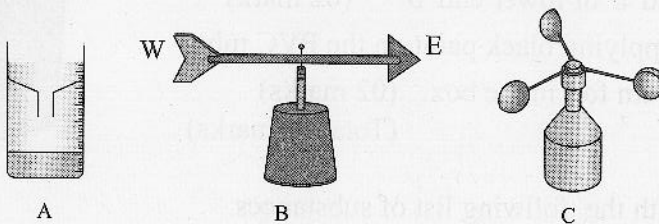
ii. At what time the lowest temperature was recorded? (01 mark)

iii. At what time the highest temperature was recorded? (01 mark)

iv. What is the temperature difference in celsius between the lowest and highest temperature.

(01 mark)

B. The figures given below show some instruments used to obtain weather information.



Use the letters A, B and C of set ups to answer the parts i , ii and iii.

i. Used to measure the speed of wind

ii. Used to measure the rainfall

iii. Used to find out the direction of wind

(03 mark)

iv. What is the direction of wind in above instance?

(01 mark)

v. What is the unit of measuring rain fall?

(01 mark)

(Total 11 marks)

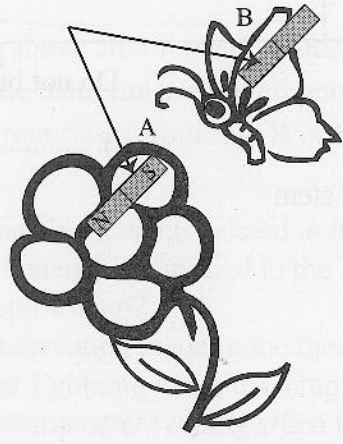
06. A. group of students spread file clips evenly on a card board and a bar magnet is slowly lowered towards the file clips.

- (i) Draw how the file clips are attracted to the bar magnet. (02 marks)
- (ii) What is the name given for the places where more file clips are attracted? (01 mark)
- (iii) Tabulate following things as things which get attracted towards a magnet and things which do not get attracted towards a magnet. (02 marks)

Brass nail, needle, Iron nail, copper nail

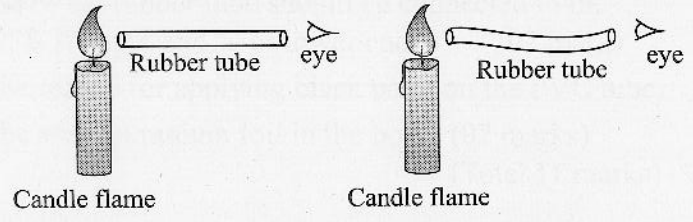
Things which get attracted	Things which do not get attracted
1.	
2.	

iv. A simple creation made by using magnet is given below.



- (a) Mark the poles of the magnet B in order to attract the butterfly towards the flower. (01 mark)
- (b) What is the reason for the attraction? (01 mark)

B. An activity done by two students is shown below.



Activity done by student A      Activity done by student B

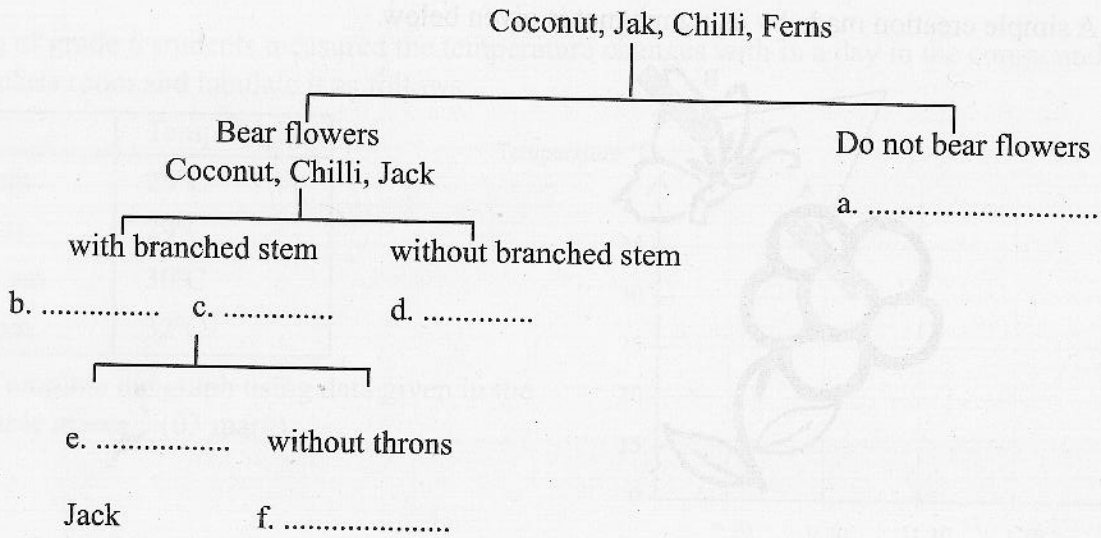
- i. Name the source of light used in this activity. (01 mark)
- ii. Write the observations of student A and student B separately. (02 marks)
- iii. Which characteristic of light is tested by doing above activity. (01 mark)

(Total 11 marks)

07. Some sounds that we hear in the environment are given below.  
 Sound of a violin, Sound of a water fall, Sound of birds, Sound of vehicle horn.

- i. Out of the above sounds.
  - (a) what are the natural sounds? (02 mark)
  - (b) what are the artificial sounds? (02 mark)
- ii. What is the sound sensitive organ in the body? (01 mark)

B. Copy the following dichotomous key in your answer script and complete it.



(06 marks)  
 (Total 11 marks)